
Ivo 03

Asymptote

Hani Rashid & Lise Anne Couture

A poised essay in geometry

In September 2007 Ivo 03 emerged in its third and final design iteration the same date as the warning for Hurricane Ivo was issued.

This powerful coffee table is cut from a 5.2 tonne billet of gunmetal-quality steel. The great hallmarks of gunmetal steel are its ability to be intricately carved, to be highly polished, and its sophisticated finish that exploits the smooth, reflective qualities of the metal.

Ivo 03's architecture is an asymmetric metal topography of 2,000 mathematically delineated diamond shaped facets, each one different. The slumped glass top is suspended across the surface which has been polished for over 300 hours, to create cascades of gleaming steel.

—

Gunmetal-quality steel

Slumped glass

—

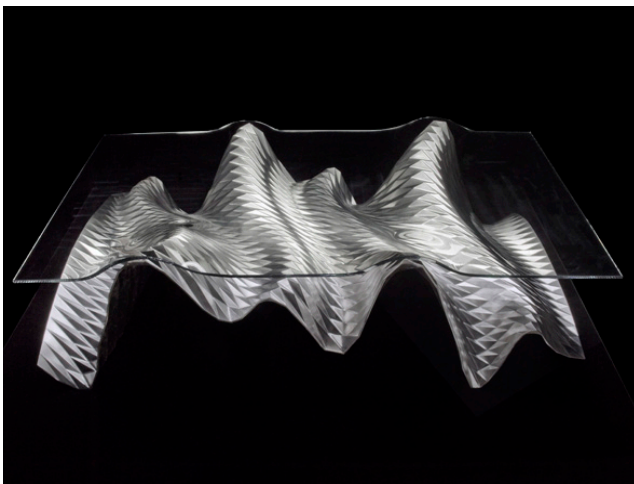
1.53 x 0.92 x 0.45 m

60.2 x 36.2 x 17.7 in

—

Meta

A Mallett Company

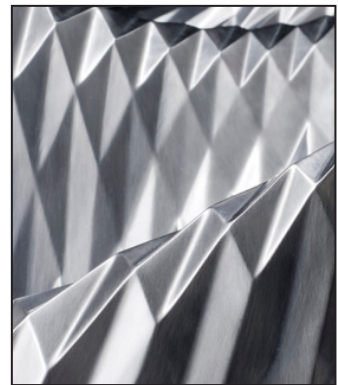
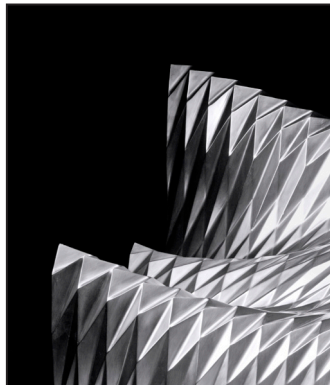
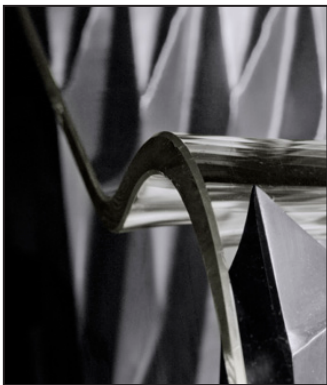


141 New Bond Street
London W1S 2BS
T +44 (0) 20 7495 5375
F +44 (0) 20 7495 3197

929 Madison Avenue
New York, NY 10021
T +1 212 249 8664
F +1 212 249 8784

E hello@madebymeta.com
www.madebymeta.com

“Rashid’s table is a work of art.” *The Times*



M